

## S05 - Top 10 Features



**Vorne** manufacturing improvement made easy

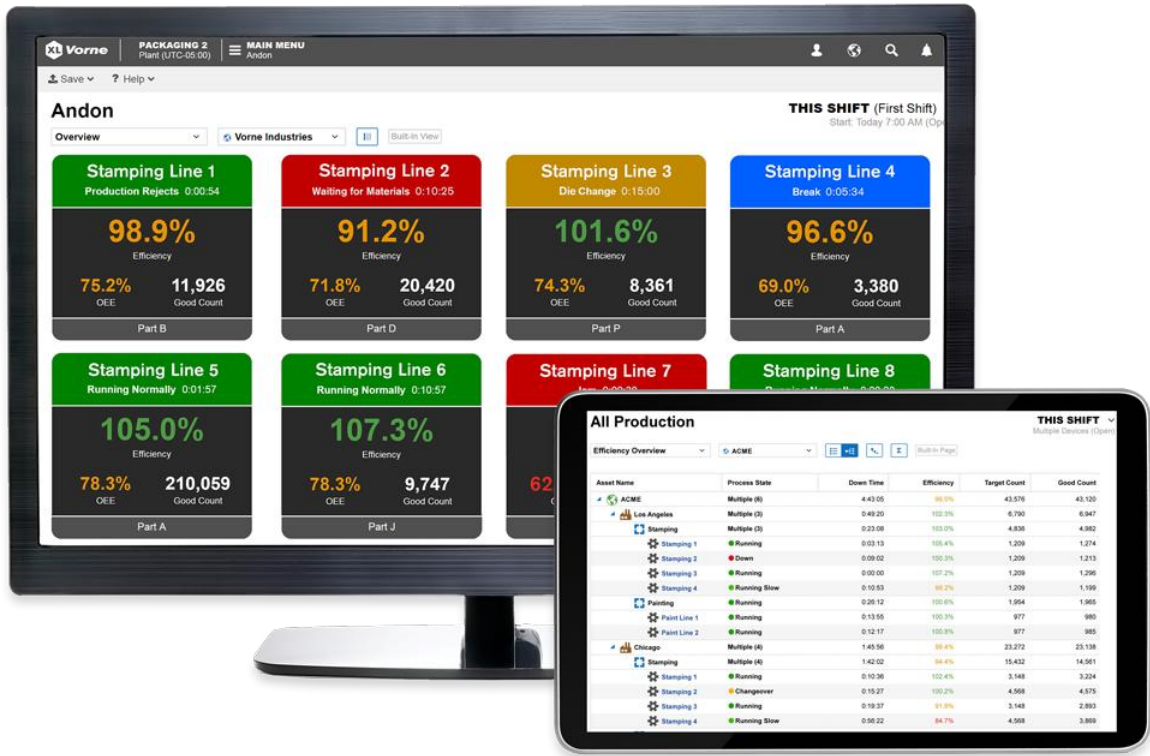


## 10 Features People Love About Vorne XL

We maintain very close contact with our users and it's always fun and interesting to hear about their favorite XL features. So, we compiled a list of 10 features that people love most about the [XL Productivity Appliance](#).

### 1. Seeing Your Factory at a Glance

People love to see what is happening right now at each of their lines. They also love having instant access to historical rolled-up data for any time period.



## 2. Accurate and Automatic Detection of Down Time

Users love having highly accurate down time data (even though it's often a shock the first time they see the numbers). For example, one supervisor told us they knew their case packer was a large source of down time but were shocked to discover 195 stops totaling 13 hours in one week. People love that XL accurately and automatically collects down time – without bias.

What are my top down losses?		What are my down time trends?		What are my most frequent down losses?	
Reason	Duration	Reason	Trend	Reason	Occurrences
Bottle Jam	3:42:36	Gearbox Failure	188.7% ●	Packer Down	17
Gearbox Failure	3:34:08	Breakdown	95.2% ●	No Cases	17
No Material	3:28:48	Labeller Down	85.5% ●	Gearbox Failure	17
Filler Down	3:26:56	Jam	84.2% ●	No Operator	17
Packer Down	3:18:36	No Cases	63.5% ●	Cutting Blade Loss	16
Cutting Blade Loss	3:14:24	No Labels	62.4% ●	Labeller Down	16
Adjustment	2:59:24	Missing Reason	48.9% ●	Bottle Jam	16
Jam	2:57:36	No Material	44.5% ●	Filler Down	16
Breakdown	2:56:24	Filler Down	23.5% ●	No Material	16
Labeller Down	2:42:00	Adjustment	13.5% ●	Jam	16
No Operator	2:39:36	Packer Down	5.2% ●	Missing Reason	16
No Cases	2:33:36	Bottle Jam	-6.5% ●	No Labels	15
Missing Reason	2:27:00	Cutting Blade Loss	-50.0% ●	Adjustment	15
No Labels	2:15:00	No Operator	-63.0% ●	Breakdown	14

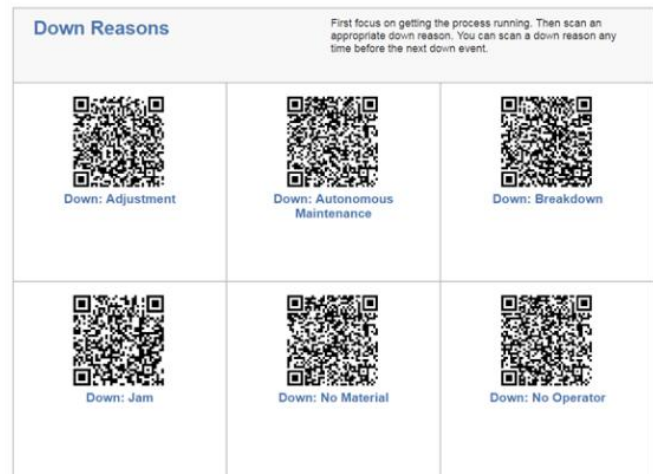
### 3. Winning the Shift

Operators love to win. Displaying TAED (Target, Actual, Efficiency, Down) on the scoreboard lets operators instantly know if they are ahead or behind their target. It's really simple – if Efficiency is green (100% or better) they are winning.



### 4. Barcode Scanning for Operators

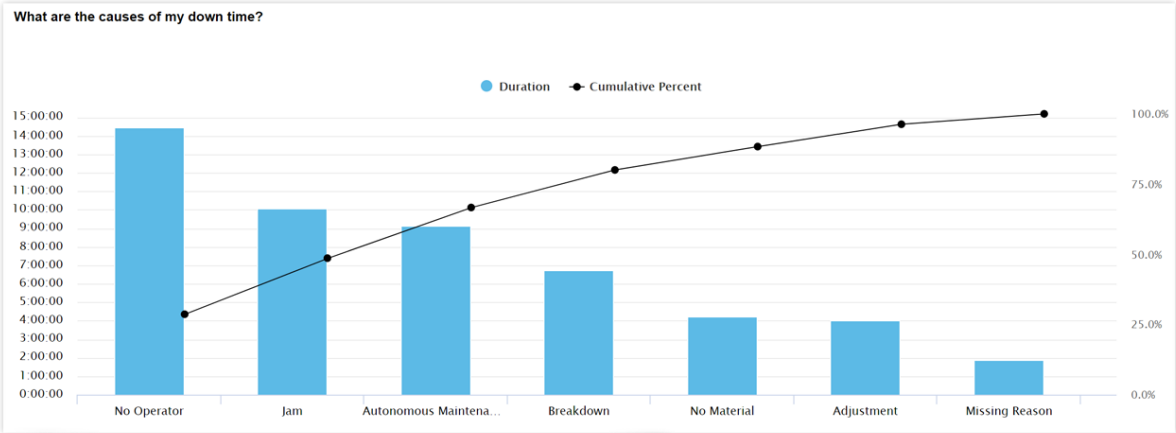
Operators also love that XL is easy to use. There's no complicated HMI or tricky menus on a computer screen. When the machine stops (or they need to start a new part run) they grab a scanner and zap a barcode. Simple. Fast. Easy.



### 5. Visualizing Down Time with Pareto Charts

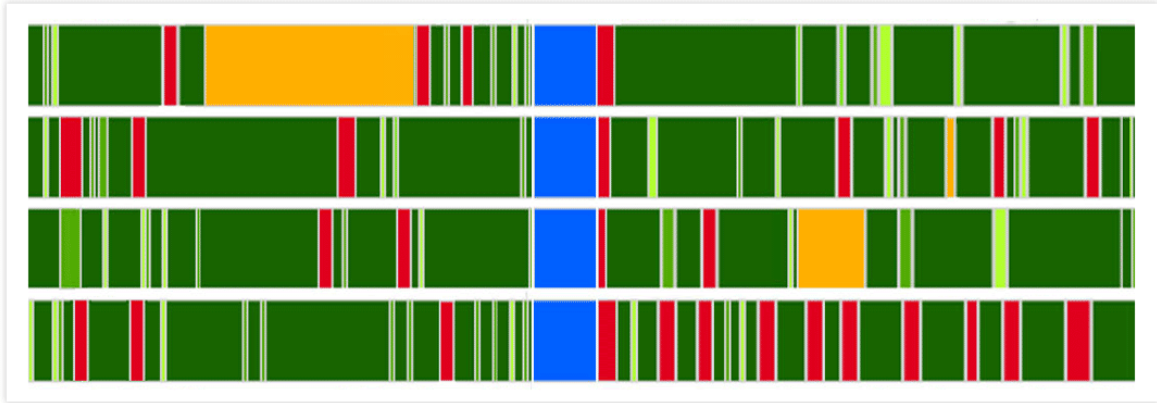
There is something very appealing about the simplicity of a down time Pareto chart. Users love to see all their down time organized by reason in this highly impactful

way. They also love that they can easily filter by shift, part, or any of the other analytical dimensions provided by XL.



### 6. Seeing Patterns Jump Off the Page

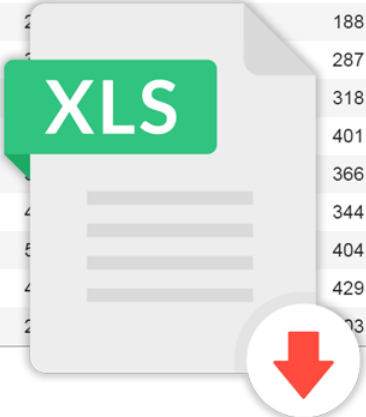
Chronograms are great for spotting patterns. People love that it is easy to see patterns such as late starts after breaks (red after blue), rough running after changeovers (light green or red after orange), or down time (lots of red).



### 7. Exporting Data to Excel

Users love that it's easy to download data straight into Microsoft Excel. Every data table can be downloaded, and it's simple to create your own data tables with whatever combination of metrics you want to export.

Part Metrics (✳ Line 1)				
Start Time	Part	Total Count	Good Count	Reject Count
4/30/19, 12:58:11 PM	Part J	2,271	2,107	164
4/30/19, 8:44:08 AM	Part I	7,598	7,021	577
4/30/19, 7:51:07 AM	Part I	2,222	2,027	195
4/30/19, 6:47:07 AM	Part O	2,212	2,028	184
4/30/19, 4:36:08 AM	Part D	4,347	4,022	325
4/30/19, 2:58:04 AM	Part D	2,212	2,031	181
4/30/19, 1:57:11 AM	Part E	2,212	2,031	188
4/30/19, 12:05:11 AM	Part P	2,212	2,031	287
4/29/19, 10:43:11 PM	Part B	2,212	2,031	318
4/29/19, 7:57:11 PM	Part I	2,212	2,031	401
4/29/19, 4:55:06 PM	Part M	2,212	2,031	366
4/29/19, 3:15:14 PM	Part A	2,212	2,031	344
4/29/19, 12:30:02 PM	Part K	2,212	2,031	404
4/29/19, 10:14:05 AM	Part I	2,212	2,031	429
4/29/19, 9:21:07 AM	Part O	2,212	2,031	173



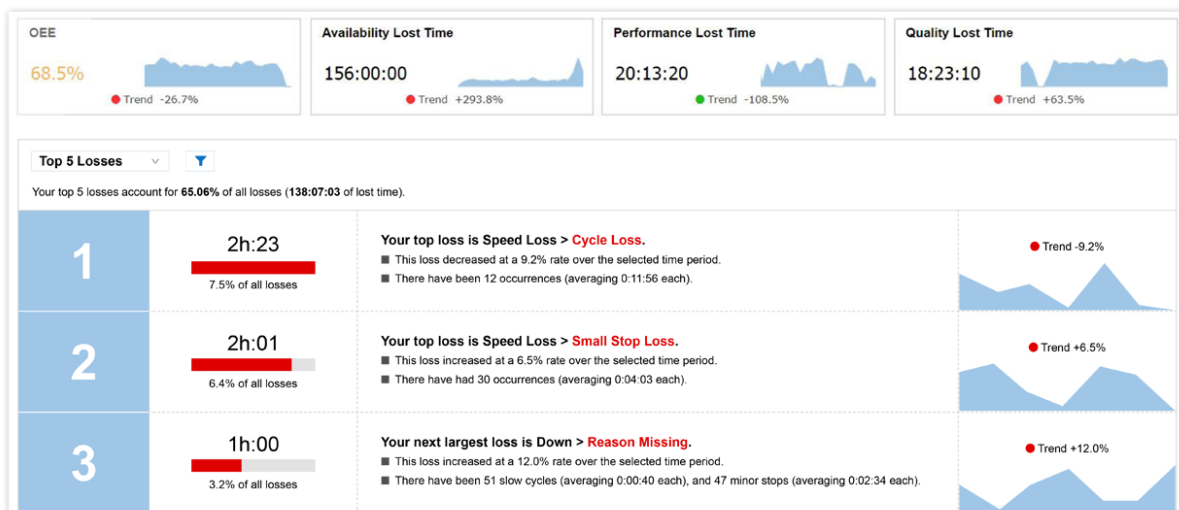
## 8. Integrating to ERP Systems

IT loves that it is easy to integrate XL to their ERP system. A common integration is starting jobs in XL with information from your ERP, and then copying metrics for each completed job back to your ERP. Our partner Vetii | GROUP provides tools for easy ERP integration, which can be deployed at any time.



## 9. Instantly Accessing Top Losses

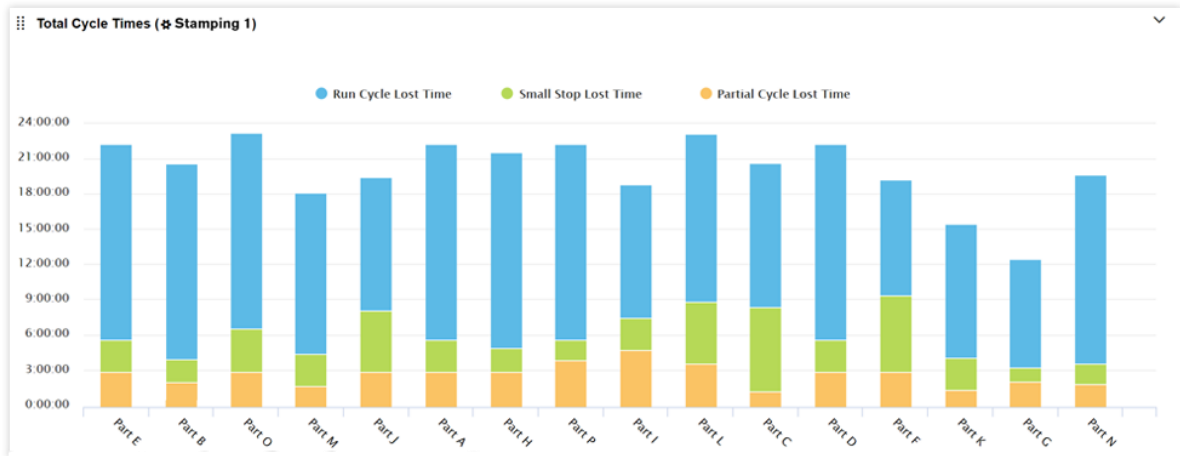
CI engineers love that the Top Losses page tells them exactly where to focus their attention (it ranks and prioritizes every loss). Consider it your continuous improvement roadmap to success. No additional analysis needed. It's the perfect page for picking your next improvement project.



## 10. Exposing Hidden Losses

Many users are amazed to discover how much production time is lost to previously

hidden losses such as slow cycles and small stops. For example, one customer discovered that their operator was slowing the filling machine in order to prevent a handful of rejects each hour – at a cost of 6,500 bottles per hour of production.



## Now It's Your Turn

Call me and we'll talk about your application and the problems you would like to solve. Or click the button below to schedule a webinar. Either way – let's talk.

[Book XL Webinar](#)

Dierik Rotsaert

Snr. consultant

0032/474/33.73.47

[info@tgm.be](mailto:info@tgm.be)

[www.tgm.be](http://www.tgm.be)

[www.trs.fr](http://www.trs.fr)

[www.oeefr](http://www.oeefr)